

## Highlights

- ❖ Fly of the Month: Kaufmann's Stimulator
- ❖ Club Trips for 2011
- ❖ Calendar

## Inside

- Page 3: Pat Jaeger and Fishing the East Walker
- Page 5: Four Minutes and Thirty-Three Seconds
- Page 6: It Was Chilly in Chile

# Target Talk

Newsletter of the Long Beach Casting Club, Established 1925

March 2011

[www.longbeachcastingclub.org](http://www.longbeachcastingclub.org)

(562) 433-9408

## Leader's Line ...

## A Tribute to Those Serving Those Who Have Served

**RICH GARRETT, PRESIDENT**

**T**his month's article is to recognize and show our appreciation to all the LBCC members who have contributed to helping veterans disabled or wounded in carrying out their duties while serving our country.

As our members are aware (or should be) the LBCC, under the direction of Carole Katz, formed the Long Beach Casting Club Project Healing Waters Fly Fishing Program in 2007.

Project Healing Waters Fly Fishing (PHWFF) was formed to provide experiences that promote the physical and emotional rehabilitation of our disabled veterans. The organization has 100 programs throughout the country and is an incredible way to show our appreciation to those who have given so much to us.

Carole's dedication and tenacity along with the contribution of over 2000 volunteer hours in 2010 alone from our members have resulted in our program in being one of the largest in the country.

In the past year, LBCC PHWFF has conducted a twelve week rod building class, eleven weeks of classes in fly tying, ten weeks of fly casting, two weeks of knot tying and several weeks of fly fishing basics.

In addition to the classes, there were two fishing trips to Jess Ranch Lakes in Apple Valley, two fishing trips to the San Gabriel River, a three day trip to Bishop and

a five day trip to the Big Horn River in Montana.

For 2011, LBCC PHWFF will be starting the year with the national rod building contest. The rod building program runs for three months, and the hope is our vets will win some of the top awards again this year. There will probably be fly tying for a few months afterward, followed by casting and fly fishing basics. Interspersed with the classes will be fishing outings to the San Gabriel and Bishop most certainly, and they are hoping to be able to have a major trip like the Big Horn again this year. PHWFF will have a booth at the Pasadena and Fred Hall fishing shows; the Breathless Agony 114 mile bicycle race will be a fundraiser for PHWFF this year, as will the Guts and Glory Ride Across America. We'll have volunteers and veterans at all of these events.

I could turn this article into a short novel if I were

*Leader's Line continues on page 2*

*Leader's Line continued from page 1*

to continue with all the accomplishments and opportunities made available by Project Healing Waters. We can explore those areas in another article. The purpose of this article was not just to show what is being done in the program, but on behalf of the rest of the club members, to express our sincere appreciation and gratitude to those who have made it happen in the past year.

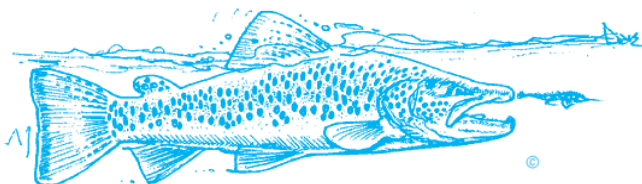
With that said, the LBCC members who helped with PHWFF in 2010 are:

Carole Katz, PHWFF National Board of Trustees

Jeff Sadler, PHWFF National Board of Trustees

Jeff Gross	Ed Madrid	Dan Rivett
Stan Holden	Dennis Martinez	Al Ross
Patti Holden	Gary McDonough	Judy Ross
Jeff Katz	Chuck Moore	Mark Tsunawaki
Frank Kropacek	Dick Nuthman	Howard Uller
John Lincoln	Clark Rector	John Van Derhoof
David Lloyd	Joe Richter	Dave Warner

Is your name up there? If not, it could be. Just get involved.



## Volunteers Needed

### PAUL BURGNER, MEMBER

**T**o work the Fred Hall Show. The Fred Hall Show will be held at the Long Beach Convention Center starting on Wednesday March 9 through Sunday March 13.

Please contact Paul Burgner @ 562-634-8285 or email kbzx2@aol.com

If you sign up to work the show you will get in free!!!!

## OFFICERS

### PRESIDENT

RICH GARRETT  
(562) 422-9696

### 1<sup>ST</sup> VICE PRESIDENT

BILL BOEHLERT  
(714) 374-6491

### 2<sup>ND</sup> VICE PRESIDENT

JIM THOMASON  
(626) 357-6050

### RECORDING SECRETARY

FRANK KROPACEK  
(562) 434-2976

### CORRESPONDING SECRETARY

THEA LINCOLN  
(562) 597-6696

### CAPTAIN

DAN RIVETT  
(562) 431-2738

### TREASURER

JOSEPH GUSTAFF  
(562) 405-2924

### MEMBERSHIP SECRETARY

NANI BLYLEVEN  
(714) 345-4654

### SENIOR DIRECTOR

RICK HILLES  
(949) 854-1076

### JUNIOR DIRECTOR

MICK WOODBURY  
(714) 840-5649

### TARGET TALK EDITOR

JOHN VAN DERHOOF  
(562) 424-7313

# Pat Jaeger and Fishing the East Walker

**BILL BOEHLERT, 1<sup>ST</sup> VICE PRESIDENT**

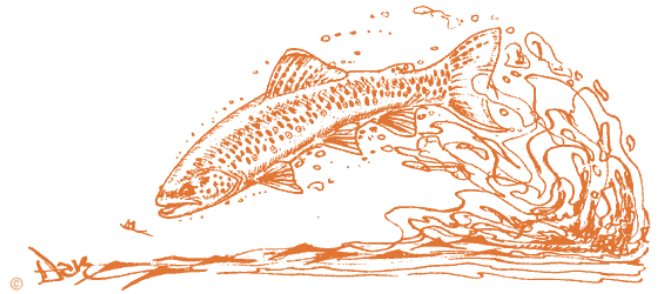
**T**he Mammoth area is a favorite venue for the club due to its myriad fishing areas. With all the lovely lakes, streams, and rivers, it can be hard to leave. Just an hour north, though, is a blue ribbon river that shouldn't be neglected: the East Walker.

The East Walker is a high desert river that flows out of Bridgeport Reservoir down into Nevada. The stretch just below the dam—the famous Miracle Mile—regularly produces impressive numbers of fish and occasional trophy trout.

For those of you who haven't yet met Pat Jaeger, you are in for a real enjoyable experience. Pat usually guides in the Eastern Sierra, especially the East Walker (where he often resides for days at a time). He also guides on the McCloud and the Rogue Rivers during the appropriate seasons. He is a very knowledgeable and entertaining angler and recently put on a program at Bob Marriott's.

So, if you have never fished the East Walker, or if you would like to know how to fish it better, do not miss the March meeting: March 31<sup>st</sup> at 7:00 PM.

See you there.



## Welcome Our New Members

**NANI BLYLEVEN,  
MEMBERSHIP SECRETARY**

**T**he Board of Directors unanimously accepted the following applications for membership on February 7, 2011:

- ❖ Peter Ahmed, San Pedro
- ❖ Hamzah Alrawi, Torrance
- ❖ Lori Alrawi, San Pedro
- ❖ Richard Craft, Long Beach
- ❖ Ash Green, Long Beach
- ❖ Tony Haffner, Long Beach
- ❖ Gary Herbert, Long Beach
- ❖ Tom & Debbie Melott, Harbor City
- ❖ Andrew Munger, Long Beach
- ❖ John Pert, San Clemente
- ❖ Leonard Rouzand, Hawthorne
- ❖ Neal Shoemaker, Long Beach
- ❖ Chris Visconti, Anaheim
- ❖ Karen Walker, Westminster
- ❖ Jim Wilcox, La Habra
- ❖ Mark Zucker, Newport Beach

New member badges will now have a little dot sticker on them, so please welcome all our new members at LBCC functions.

Please welcome all our new members at LBCC functions.

# Experience the Green!

JEFF SADLER, PAST PREZ, SUNSHINE BOY,  
ALL AROUND GOOD GUY

**A**t the regular February general meeting you had the chance to see me, Mr. Royal Wulff on the Green, present a slide show on his favorite river, the Green River in Utah below Flaming Gorge dam. Secret spots were revealed, favorite flies (Yash's of course, because you already know my only one) shown, tactics were discussed, and there were maps galore.

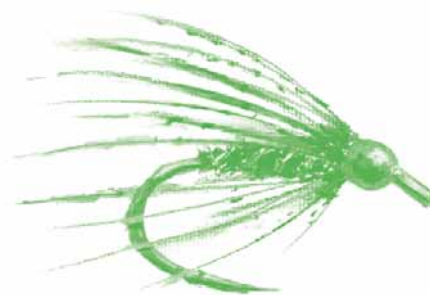
That was then so now, here's your...

**SECOND CHANCE** – Fish the Green River in person on the club's April trip to this beautiful tailwater.

<b>DATES:</b>	Arrive April 28, depart May 3.
<b>OPTIONS:</b>	
<b>STANDARD -</b>	5 nights Alpine cabin two days guided Apr 29, May 1 ..... <b>\$756.98</b>
<b>EXPANDED -</b>	5 nights Alpine cabin three days guided Apr 29, 30, May 1 .... <b>\$984.35</b>
<b>FULL GUIDED -</b>	5 nights Alpine cabin four days guided Apr 29, 30 May 1, 2 ..... <b>\$1,211.73</b>
<b>EL CHEAPO -</b>	5 nights Ponderosa Cabin, triple occupancy, no guides ..... <b>\$256.43</b>

*All prices are per person double occupancy*

Please reserve with Brandt at Bob Marriott's 714-578-1880. We have 6 Alpine and one Ponderosa with 6 top guides reserved. However, if you want a special guide and be assured of a place to sleep please contact Brandt immediately with a 50% deposit.



## Club Trips for 2011

**JIM THOMASON, 2<sup>ND</sup> VICE PRESIDENT**

**T**he March outing will be our annual Newport Bay Bass Tournament hosted by Mark Tsunawaki. This is a great chance to try our water close to home. If you haven't tried fishing our local saltwater you're missing out on a wonderful opportunity most anglers in the rest of the country don't have. You can float along enjoying great weather while catching several species of fish and still be home for a late lunch.

While we all love fishing the Eastern Sierra's if you need to fish every week or two our local saltwater is an option worth exploring. You can even use much of your current gear. See article elsewhere for details.

### 2011 CLUB TRIPS

TRIP DATE	TRIP AND TRIP LEADER
March 26	Newport Bay Bass Tourney w/Mark Tsunawaki (Pre-Trip March 16)
April 28-May 3	Green River w/ Jeff Sadler
May 21	Tejon Ranch Small Lake w/ Jim Thomason (Pre-Trip May 11)

For more information, contact me at [jathomason@mail.com](mailto:jathomason@mail.com) or at (626) 357-6050. All Pre-Trip Meetings are held at the clubhouse at 7:00 PM. Trip locations and dates are subject to change. Please monitor Target Talk for the latest information.

# Four Minutes, Thirty-Three Seconds

JEFF SADLER, PAST PRESIDENT

The extreme modern composer John Cage once wrote a piano piece called “4 Minutes, 33 Seconds.” The pianist came on stage at the premier, opened the piano, set out the musical score, started an egg timer and sat down for 4 minutes and 33 seconds without moving. At the end he stood up, collected his music, closed the piano, took a bow, and walked off stage. The audience was dumbfounded, didn’t know whether to applaud, or boo, or what.

The goal was to allow the audience to listen, and only listen to their environment.

So, is this article about weird music? No, it’s about using a relatively unused sense while fishing. We use sight predominantly, tactile sense certainly, mechanical motions repetitively, and the rest of our senses to a lesser degree. Smell and taste generally only at lunch but we do occasionally listen. When you’re walking up or down a stream that is brush covered you listen to the sound of the water to find pools or runs or waterfalls. While onstream you listen for the “galoop”, or “slurp” or “kerplunk” of rising fish.

What I’m asking is that you move a little away from the stream, find a shady spot, sit down and listen for 4 minutes and 33 seconds. Don’t close your eyes and nap, don’t go into a trance, this is not a Zen thing. Just listen.

Listen to the brook babble, the breeze. Maybe insects will hum, maybe a lizard will skitter, certainly birds and bees and potentially other critters. Become a part of the aural environment. It will be a different experience and hopefully a new and interesting one.

You will hear your own breathing, your heartbeat and affirm your life as part of nature. This is good. So what

will it cost you?

Four minutes, thirty-three seconds.



## Dues are Due!

NANI BLYLEVEN,  
MEMBERSHIP SECRETARY

Membership renewal forms were sent out in January and member dues are due at the end of this month, March 31, 2011. Many thanks to those of you who have already sent them in; you have made my life easier. For those who still have not paid, please, pretty please, mail them in as soon as possible.

Aside from replenishing the Club’s operating funds, April is when the new Roster is prepared and it only includes those members in good standing (read this as: *paid up*). So timely dues means I don’t have to follow up (“nag”) anyone and I can work on helping with the Roster, thus making my volunteer job a cheerful position!

This is also the time to update your contact and email information. If you are not getting notices when the monthly Target Talk is posted, then I don’t have a current email for you. If you have not yet received your renewal form please contact me!



# It Was Chilly in Chile

BOB GRAHAM, MEMBER

Last year I was invited by Joe to accompany him and several of my fishing buddies on a trip to Chile. I scrimped and saved and prepaid over time and finally got on an airplane last week headed to the end of the world.

I had no idea how far away Chilean Patagonia was. On the 767 from LAX to Santiago, there was a TV screen on the back of the seat in front of each passenger. One of the programs featured a world map with an icon of the airplane showing its location in relation to land. At the bottom of the screen was white. Snow! We ended up only a few hundred kilometers from Antarctica! And South America swings way to the east; so much so that there was a five hour difference in time zones, i.e. two hours east of NYC. We left at noon one day and arrived at the destination airport about midmorning the next day.

Flying in to Chile, one notices high mountains and deep valleys with lots of cold, running water. Some of the rivers descend from glaciers. When we disembarked at the airport at Coyhaique, I was nearly blown off the exterior stairs leading from the plane. My carry on baggage was flying horizontally. My checked baggage (and those of three of my companions) was lost somewhere in Peru. It took several days for the bags to reach us. Fortunately, my carry on luggage included my rods and reels so I could share them with others.

Patagonia must be Spanish for “the land of never ending wind, rain and changeable weather where standing can be a chore and fly fishing is impossible,

unless you are hunkering down in a deep crevasse and you are wearing very heavy boots or are strapped to a tree.” The participants on the preceding week experienced greater hurricane strength winds than we did and, unfortunately, they also had heavy rains. The rain colored up some of the rivers we tried to fish and the catching results showed it. But our weather was different each day and was generally quite mild. Sun block was a necessity and we soon got used to the mild 20 knot breezes.

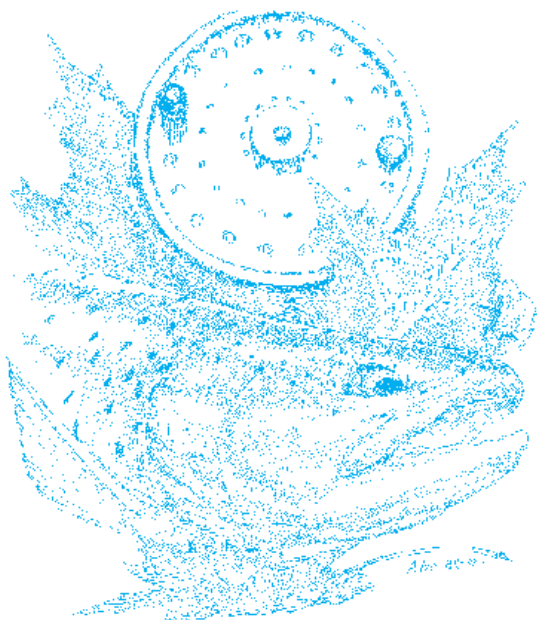
We stayed at Estancia del Zorro, a 15,000 acre working ranch on pampas grass covered steppes. Zorro means “red fox” not masked crusader. I had difficulty appreciating the enormity of 15,000 acres. The property went half way up the mountain over there to the north, and ran to the Argentinean border to the east. We could see the guard houses at the crossing

from the porch at the lodge. The Estancia’s boundary was hidden by hills to the west. The ranch raises 4,500 sheep which had been shorn the week before. They also raise alpacas but only a few dozen were mixed in with the sheep. There was one black sheep which proved to be a marker. There is predictably one black sheep for every certain number of sheep so it is easier to count the black sheep than to count the whole herd.

They also planted acres of Douglas fir trees for the paper mill which is a new business.

The species is known as “pino Oregon.” This is production farming and the trees are planted in precise rows, a very unusual sight for trees. Another unusual sight was the hay. To keep the hay dry during the winter, Chileans wrap the hay bales in white plastic much like shrink wrap. When the hay is placed in neat rows it looks like they are raising marshmallows!

Chileans are a healthy, hardy people and we could



see less than 5% obesity. Partly this is due to the fact that they walk everywhere. While there were paved roads in town, much of our travel to the various fishing venues was on unpaved roads. Indeed the main national highway running from Coyhaique by the Estancia's front gate to the Argentine border was gravel—somewhat like Chalk Bluff Road with rocks. Thus while the Estancia was only 40 km from town, it took an hour to get there.

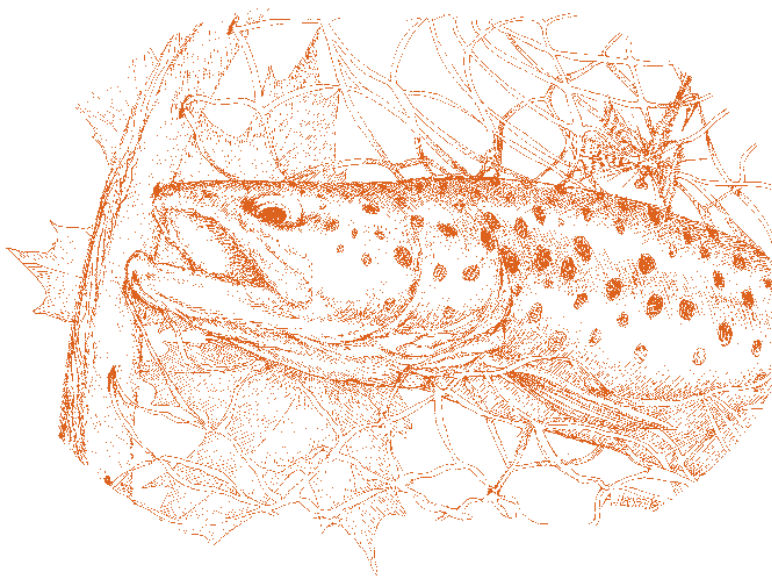
Each breakfast started off with orange juice and a plate of fresh cut fruit, then cereal or granola with yoghurt. The main dish was an egg scramble but more often a crepe to which you added a berry jam (“calafate”) or a Chilean sauce (“Aji”) of hot peppers. Lunch always included a hot soup and usually a grilled meat. Dinners always included a green salad and a meat served over rice, carrot puree or quinoa. Dessert rounded out the meal. Every dinner included unlimited Chilean wines, all of which were very good. The chef spoke no English and although Carlito had two gas ranges in the kitchen, he preferred to use the wood burning oven and stove. The results were simply great!

Because of the condition of the road system, each fishing venue was about two hours from the lodge. We would usually leave at about 8:30 or 9:00 AM but wouldn't return until 8:00 PM or so. After a shower, a little wine and dinner, we normally got to bed at 10:30 PM, just after a late Chilean sunset.

The pampas is not a friendly space. The rooster that crowed every morning at 6:30 AM lorded over three hens. On our first day, one hen had three chicks (down from five the week before). When we left there was

only one remaining. The newest clutch contained eight chicks on our arrival and only three remained when we departed. There are no snakes in Chile so maybe the red fox got them. Somewhere on the pampas is a predator with small chicken feathers sticking out of his smile.

One night I was able to see the Southern Cross which points to the south celestial pole and is not visible in North America. More impressive was the Milky Way, which is seen on edge, containing millions of stars, mostly old and cold.



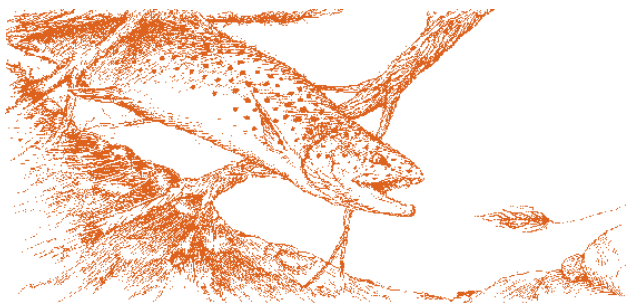
The Chilean scenery is simply spectacular. The Estancia was actually east of the Andes (the highest mountain range in the world other than the Himalayas), so driving into Coyhaique involved peering at the Andes for an hour. When the fishing was slow, we spent our time photographing the landscape. The fishing venues were

varied enough that all physical abilities could be accommodated. Charlie Course and I (“the old men”) floated the Rio Manihuales and Rio Simpson on separate days. While the Simpson runs through Coyhaique, it traverses to the west through the rain forest country. Big trees abound, clinging to steep high hills. The Manihuales and Simpson join to form the Rio Aysen. About 10 km below the confluence is Puerto Aysen. Approximately 10 kms out of town the fjord section of the Rio Aysen begins. King salmon are caught in this area.

The old men's fishing was on the unnamed spring creek that runs for 6 km through the Estancia on its way to the Rio Pedregosa. We fished the Pedregosa our first day and the spring creek for two days. The Pedregosa yielded many fish but mostly on the

smaller side.

The others fished the more physically challenging rivers which required long hikes over uneven yet beautiful terrain. Many of them stopped off at the various owners' houses on these private access rivers to enjoy the warmth and friendliness of the Chilean people. Our anglers were often treated to oven fresh breads, hand crafted jams and other items. Frequently, they engaged in the social tradition of sharing Yerba Mate. This is a hot herbal tea served in a gourd or (often) a hand carved cup and then sucked through a metal straw which filters out the leaves.



Everyone denies any hallucinogenic quality to the Mate but it does appear to be habit forming. Kathy Kim and Maria Rivas both bought Mate cups and stems. I noticed Kathy's fish count improved after her Mate as did the size of her fish—at least in her mind!

The last night we were treated to a posada. A lamb and a half were placed in iron racks and grilled at a huge fireplace fueled by whole cypress fence posts. Joe said the other half was out on the pampas, wandering around, unevenly. Maria called her Ilene. We were serenaded that night by a duet featuring Spanish guitar and accordion. The accordionist was a vibrant fireplug with a quick smile and very short stubby fingers which flew across the keyboard in a blur. His songs seemed mostly Italian and French!

The fishing was great but I have no idea about the catching. Numbers were not mentioned although I was told that Kirk Bannerman (who spent two weeks with Joe) was skunked for three days running; and I know Kirk can catch fish in a mud puddle! But all of us want to return to this marvelous area regardless of the quality of the catching!

## 103<sup>rd</sup> ACA National Tournament

**MARK TSUNAWAKI AND BOB MIDDO**  
103<sup>RD</sup> ACA NATIONALS CO-CHAIR 2011

First of all, I would like to thank all of the volunteers that came out to help at our Southwestern Casting Tournament, February 12<sup>th</sup> and 13<sup>th</sup>. Because of all your help, we had another very smooth and successful tournament. Which leads me to this article...

With the Long Beach Casting Club's hosting of the 103<sup>rd</sup> ACA National Tournament from August 2 through August 6, we will need many, many more volunteers. This is a 4-DAY tournament, starting each day at 8:00 AM and running until 4:00 PM or 5:00 PM. We are expecting anywhere from 50 to 80 casters from all over the United States and Canada. It's important to have a pool of volunteers so that we can schedule you for a variety of duties during specific times. These are long exhausting days and it's very difficult to be focused when the same people are doing the same duty day after day.

We have hosted two recent, very successful Nationals in 2000 and 2006 and hope that 2011 will be even better. Of course, a lot success depends on the "volunteers" from the Long Beach Casting Club.

We will have a "Volunteer Sign Up" sheet on the casting bulletin board near the bathrooms. If you have any specific questions, you can contact: Mark Tsunawaki, Bob Middo, or Dan Rivett (current LBCC Captain).

Thank you!



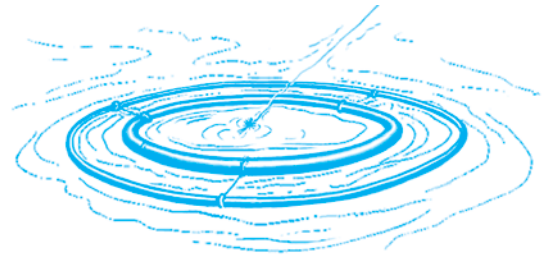


# Southwestern Tournament Wrap-up

DAN RIVETT, CAPTAIN

The 2011 Southwestern Casting Tournament was held the weekend of February 12 & 13, 2011. We were blessed with warm temperatures, clear skies and virtually no wind. Our volunteers began arriving Friday to surround the perimeter of the pond with flagging and caution tape, to create a safe area for the casters to work without walkers and dogs interfering. Friday also allowed time to stripe the parking stalls, which created some order before the crush of vehicles arrived Saturday & Sunday.

We at the Long Beach Casting Club are fortunate to have the facilities to host these casting events. Casters participating in the casting games represented casting clubs from Oakland, San Jose, Seattle, Phoenix (participating as LB members), Long Beach, and Scarborough, Ontario Canada. The following are the first place finishers for the A, B, & C classes in accuracy and distance events. For a complete listing of results please visit the LBCC web site.



Trout Fly	A – Chris Korich, OCC;	B – Gregg Rodriguez, LBCC;	C – Donna Walkuski, LBCC
Bass Bug	A – Chris Korich, OCC;	B – Peg Van Natter, Seattle;	C – Marian Tallon, LBCC
¼ Oz. Plug Acc.	A – Henry Mittel, OCC;	B – Luke Sing, San Jose;	C – Elaine Gong, OCC
Open Plug	A – Henry Mittel, OCC;	B – Frank Kropacek, LBCC;	C – Lori Mandt, LBCC
Angler's Dist.	A – Henry Mittel, OCC;	B – Gregg Rodriguez, LBCC;	C – Elaine Gong, OCC
¼ Oz. Plug Dist.	A – Henry Mittel, OCC;	B – Tom Gong, OCC;	C – Elaine Gong, OCC
Dry Fly	A – Chris Korich, OCC;	B – Luke Sing, San Jose;	C – John Billota, TPFR
3/8 Oz. Plug	A – Henry Mittel, OCC;	B – Bob Middo, LBCC;	C – Nani Blyleven, LBCC
5/8 Oz. Plug	A – Henry Mittel, OCC;	B – Mark Lipe, LBCC;	C – Mark Rakozy, LBCC
Wet Fly	A – Chris Korich, OCC;	B – Luke Sing, San Jose;	C – Donna Walkuski, LBCC

The tournament finished up with a 5/8 Oz. Plug event, consisting of four casters per team. The team with the highest cumulative score, with a possible 400 points was Golden Gate with 371, followed by LBCC team #2 at 368, San Jose at 367, Oakland (OCC) at 366, and last but certainly not least LBCC team #1 with 355 points.

From the comments I received and over heard from various casters we met their expectations for a successful and fun tournament. I want to give a loud shout out of thanks to all of the volunteers that came out to help. An event like this takes a lot of work with many positions to fill and our club members stepped up to answer my call for assistance, for instance the Saturday night dinner prepared by John and Thea Lincoln. Under the guidance of the perpetual leaders of this event such as Mark Tsunawaki, Mark Lipe and Jeff Sadler I have had the privilege to, as Captain for two years, head up the Southwestern Tournament and it has been my absolute pleasure once again.

The last Sunday morning cast for this season is March 13. This is the Director's Handicap and will be staffed by your members of the Board of Director's. So come out and join the fun. I hope those of you that volunteered at the SW have been bitten by the casting bug and get more involved in casting the games.

I'll see you at the pond...

# Your Proposed LBCC Officers for 2011-2012

## NANI BLYLEVEN, MEMBERSHIP SECRETARY

**I**t's time to select new officers for the Long Beach Casting Club. Here is the proposed slate of officers for the 2011-2012 Board of Directors:

President	Bill Boehlert
First Vice President	Jim Thomason
Second Vice President	to be selected
Corresponding Secretary	Howard Uller
Recording Secretary	Joseph Austin
Membership Secretary	Nani Blyleven
Treasurer	Joe Gustaff
Captain	Jeff Gross
Junior Director	Rich Garrett
Senior Director	Mick Woodbury
LBCC Advisory Board	All Past Presidents

The election will take place at the Annual General Meeting (AGM) on April 7, 2011. Note that the AGM is on the FIRST Thursday in April and is lieu of the regular monthly meeting. April starts our new fiscal year so the new Board is to be installed. It is a brief meeting (no guest speakers) and all members are encouraged to attend.

The Second Vice President nominee has not yet been determined so if you would like to get involved or would like to nominate someone, please let Paul Burgner, Marv Dworzak, Joe Libeu, Al Ross or Mark Tsunawaki know.

Any ten members in good standing may nominate other candidates for the same office(s) from the floor at the Annual General Meeting. Such nominations shall be in writing and be signed by said and delivered to the Corresponding Secretary before the election. Refer to the Long Beach Casting Club Bylaws, Article VIII, Section 5, for the procedure to nominate candidates from the floor at the meeting. The Bylaws are located in your LBCC Roster.



## Maggie Merriman Entomology Workshop

JOHN VAN DERHOOF, EDITOR

**O**n Saturday, March 19, 2011 join Maggie Merriman at the Long Beach Casting Club for her 11th Annual Basic Entomology Workshop for Fly Fishers.

You will learn how to “Match the Hatch” and how to select the correct fly for a given situation. Maggie stresses the use of common English names and not the biological “Latin” names many associate with entomology, so you can leave your *Acroneuria californicas* at home.

The class will begin around 9:00 AM and run until 1:00 PM. The cost for the workshop is \$50.00 and includes samples of insects, corresponding flies and an extensive handout. Bring a snack, note pad and some fly boxes to look at and compare the insects.

You must Pre-Register for the workshop by March 12, 2011 by mailing the fee to: Maggie Merriman, 19791 Coastline Lane, Huntington Beach, CA 92648, or you can call her with any questions you may have at 714-969-5829. You will receive an exact map of the location upon registering.

# Newport Bay Bass Tournament

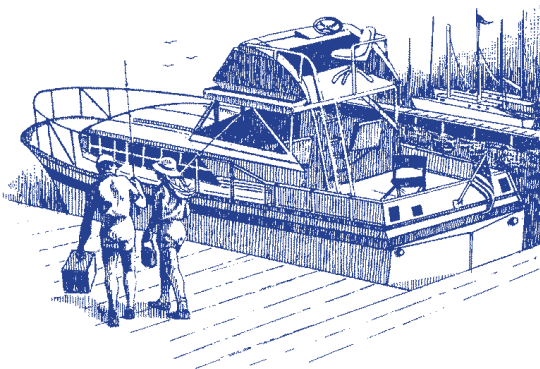
**MARK TSUNAWAKI,  
PAST PRESIDENT & TRIP LEADER**

**T**o all Long Beach Casting Club members, come out for a chance to get your name engraved on the Howard T. Isley Perpetual Trophy in our Trophy Case for all to see. It's a trophy that is awarded for the largest bass (Calico Bass, Sand Bass, or Spotted Bay Bass) caught on an artificial lure using 6 lb. test line or less, at the Newport Bay Bass Tournament within Newport Bay.

As last year's tournament winner, I will host the Pre-Trip Meeting on Wednesday, March 16, 2011 at 7:00 PM at the clubhouse. You will get details for the tournament, techniques, equipment advice and possibly the whereabouts of some productive spots.

The tournament is slated for Saturday, March 26, 2011, starting at the crack of dawn, or when the boats are allowed to go out, and go until noon, where the measuring will take place at the Pavilion's dockside. This is not for the most bass or heaviest bass but for the longest live bass. Remember, a legal bass has to be at least 12" in length.

I hope to see many of you there for a fun time. Those of you who want to challenge your skills and luck can even try to catch your bass using fly fishing equipment. As long as your tippet is not greater than 6 lb. test.



## A Request from the Recording Secretary

**FRANK KROPACEK,  
RECORDING SECRETARY**

**A**s we move closer to the end of our fiscal year, we are preparing for the Installation and Awards Banquet which will take place mid April of this year.

In addition to keeping track of the tournament casting scores, it is my responsibility to also track the fishing award submissions as detailed on page 49 of the current roster. If you do have a catch that you would like to report, there is a form on page 70 for you to use and we will have some available in the clubhouse as well. Please submit them as soon as you can.

A lot of our members are really missing a lot of fun by staying away from the competition casting. The games help you prepare for actual fishing by focusing on casting strokes, line handling, and gauging distance. As I said, we have good times when we meet.

Give it a try, what have you got to lose?

# Fly of the Month: Kaufmann's Stimulator

JOHN VAN DERHOOF, EDITOR

**W**hat the heck is it? The Stimulator is one fly that evokes just that kind of reaction. Sort of a caddis fly, sort of a stone fly, sort of a hopper; this pattern works so well under so many different circumstances that it should be included in your fly box.

Developed by Randall Kaufmann this fly is, in my opinion, one of the best attractor patterns around. The secret to its success lies in its qualities of illusion. It isn't anything specific but the bushy wing and tail, the palmer hackle all combine to make it look alive and quite edible whether there are ants on the water, mayflies, caddis, stoneflies or nothing at all.

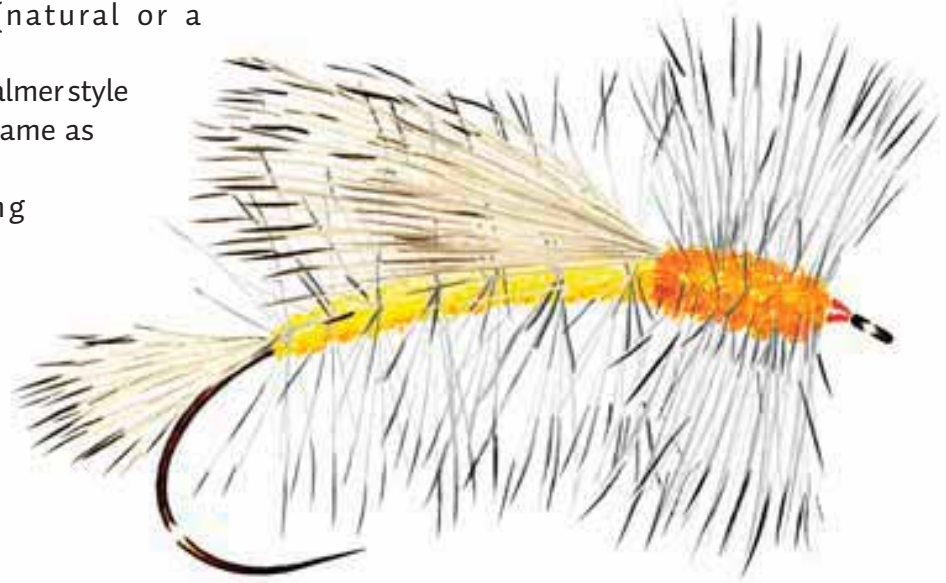
Tie the Stimulator in a variety of sizes and colors. Yellow is an excellent all around color but orange, olive and black can all be very effective. The all black version is particularly effective and quite visible at dusk. For Sadler there is even a "Royal" Stimulator.

You should also consider changing the hackle colors. I prefer using grizzly for the body hackle but some tiers swear by brown hackle. On occasion I will change the thorax hackle to brown dyed grizzly, dark dun dyed grizzly or olive dyed grizzly. The dyed grizzly hackles help to add the illusion of movement adding a truly lifelike quality to the Stimulator or any fly, for that matter.

Whatever the Stimulator is doesn't really matter. What does matter is that the fly works and works very well. Tie some up and take them out for a test drive.

## Materials for tying Kaufmann's Stimulator:

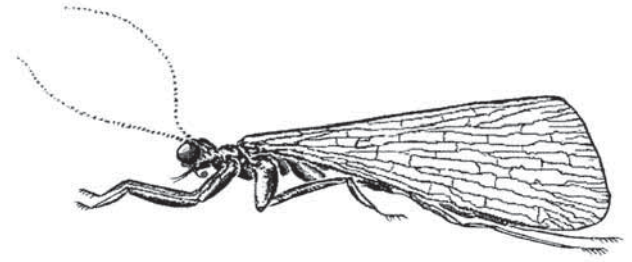
- Hook: 2x or 3x long Tiemco 2312 or 200R, Daiichi 1270 or Mustad 79580, in sizes 6–16
- Thread: Orange, 3/0, 6/0 or 8/0
- Tail: Elk (natural, dyed or bleached to suit)
- Abdomen: Yellow dubbing (natural or a synthetic)
- Rib: Grizzly hackle, tied palmer style and the length the same as the gap
- Thorax: Orange dubbing (natural or synthetic)
- Hackle: Grizzly or brown over thorax, dry fly style
- Wing: Elk (natural, bleached or dyed to suit)





### Instructions for tying Kaufmann's Stimulator:

1. Attach your thread to the hook at the headspace and wind evenly down to the point of the barb. Cut off a clump of elk hair, remove the basal hairs and stack the tips. Tie in the elk hair for the tail, its length extending beyond the bend of the hook (about the length of the hook gape). Bind the butt ends of the elk hair on the hook shank as an underbody.
2. Select a good quality grizzly (or brown) neck or saddle hackle that has a length equal to or slightly less than the hook gape. Tie in hackle for abdomen with the concave side of the feather facing forward. Dub a tapered yellow body forward to about 2/3 the length of the shank.
3. Wrap the hackle forward, palmer style, over the abdomen and tie off. Remove another bunch of elk hair for the wing, knock out the basal hair and stack. Tie in the elk hair wing so that the end of the wing is even with the bend of the hook.
4. Select a good quality neck hackle that is slightly longer than the abdomen hackle. Tie in the thorax hackle with the concave side facing forward and dub the orange thorax forward to the headspace. Wrap the hackle forward, dry fly style and secure it firmly.
5. Form a small, neat head, whip finish, apply a thin penetrating coat of head cement and take your fly out for a spin.



## SIERRA PACIFIC FISHING ADVENTURES

### YOUR FLY FISHING DESTINATION & RESORT OUTFITTER

**FLY FISHING EXCURSIONS • CLASSES • PRIVATE INSTRUCTION**

### Upcoming Bighorn River Trip - April 24-29

Join us for a 6-day Fly Fishing Adventure to Montana's Bighorn River. Experience a fishing odyssey you will remember for many years to come! The Bighorn is one of America's premier Blue Ribbon fisheries with plentiful Rainbows and Browns in the 16 to 23 inch range.

Trip includes 4 Days Guided Drift Boat Fishing with 2 Anglers per Boat. Accommodations, Ground Transportation, Continental Breakfast and Dinner while at the Lodge plus Lunches on Guided Fishing Days Included. Airfare, Fishing License, Gratuities Extra.



**\$1855 per person** (double occupancy)  
with all meals included.

**Reserve Early!**  
**SPACE IS LIMITED!**



Sierra Pacific Fishing Adventures • 3901 Brayton Ave., Long Beach, CA 90807 • (310) 749-6771 • [www.joelibeufllyfishing.com](http://www.joelibeufllyfishing.com)

# Calendar of Events

## March

1	Tuesday	7:00 PM	Fly Tying Class: Second Session
3	Thursday	7:00 PM	Activity/Spey Night at the Pond
7	Monday	7:00 PM	Board of Director's Meeting
8	Tuesday	7:00 PM	Fly Tying Class: Second Session
9	Wednesday	9:00 AM	Conservation Team at San Gabriel
9-12	Week		Fred Hall Show
10	Thursday	7:00 PM	Activity/Spey Night at the Pond
13	Sunday	8:00 AM	Breakfast
		9:00 AM	Club Cast: Director's Handicap
15	Tuesday	7:00 PM	Fly Tying Class: Second Session
16	Wednesday	7:00 PM	Casting Instructor's Clinic
		7:00 PM	Newport Bay Bass Tournament Pre-Trip Meeting
17	Thursday	7:00 PM	Activity Night/Spey Night at the Pond
19	Saturday	9:00 AM	Maggie Merriman Entomology Class
22	Tuesday	7:00 PM	Fly Tying Class: Second Session
23	Wednesday	7:00 PM	Casting Instructor's Clinic
24	Thursday	7:00 PM	Activity Night/Spey Night at the Pond
26	Saturday		Newport Bay Bass Tournament
29	Tuesday	7:00 PM	Fly Tying Class: Second Session
30	Wednesday	7:00 PM	Casting Instructor's Clinic
31	Thursday	7:00 PM	Monthly Meeting: Past President's & Pat Jaeger on the East Walker

## April

5	Tuesday	7:00 PM	Casting Practice - No Host
6	Wednesday	9:00 AM	Conservation Team at San Gabriel
		7:00 PM	Casting Instructor's Clinic
7	Thursday	7:00 PM	Annual General Meeting
9	Saturday		Clubhouse Rental to Beyond the Breakers Salt Water Clinic
10	Sunday		Clubhouse Rental to Wilderness Fly Fishers
12	Tuesday	7:00 PM	Casting Clinic - Orientation
14	Thursday	7:00 PM	Activity Night/Spey Night at the Pond
15	Friday	6:00 PM	Simon Gawesworth Spey Class for LBCC Members
16-17	Weekend		Simon Gawesworth Private Spey Class
17	Sunday	5:00 PM	Annual Awards and Installation Banquet
19	Tuesday	7:00 PM	Casting Clinic - 1 <sup>st</sup> Class
21	Thursday	7:00 PM	Activity Night/Spey Night at the Pond
26	Tuesday	7:00 PM	Casting Clinic - 2 <sup>nd</sup> Class
28-May 3			Green River Club Trip

## May

2	Monday	7:00 PM	Board of Director's Meeting
3	Tuesday	7:00 PM	Casting Clinic - 3 <sup>rd</sup> Class
4	Wednesday	9:00 AM	Conservation Team at San Gabriel
5	Thursday	7:00 PM	Activity Night/Spey Night at the Pond
10	Tuesday	7:00 PM	Casting Clinic - 4 <sup>th</sup> Class
12	Thursday	7:00 PM	Activity Night/Spey Night at the Pond
17	Tuesday	7:00 PM	Casting Clinic - 5 <sup>th</sup> Class
19	Thursday	7:00 PM	Activity Night/Spey Night at the Pond
24	Tuesday	7:00 PM	Casting Practice - No Host
26	Thursday		Monthly Meeting: Czech Nymphing
31	Tuesday	7:00 PM	Casting Practice - No Host

# Annual Awards and Installation Dinner

**RICH GARRETT, PRESIDENT**

**T**he Club will hold its annual Awards and Installation Dinner at the clubhouse on Sunday April 17, 2011 at 5:00 PM.

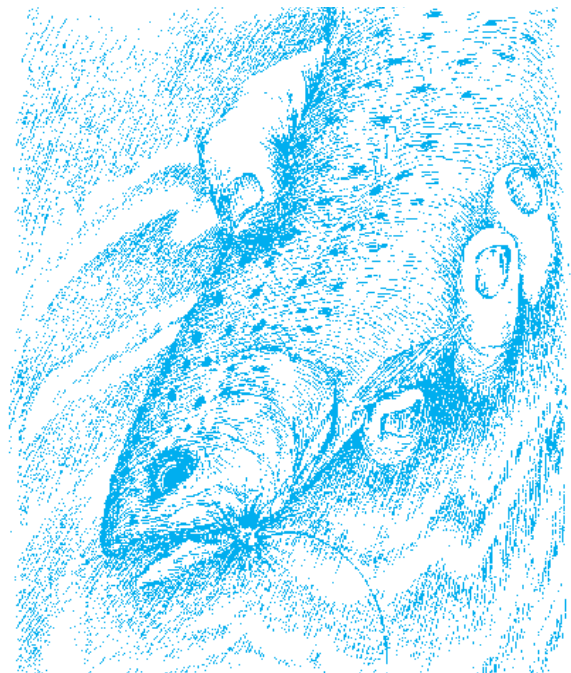
We will hand out awards for casting accomplishments and member's service. Also we will give thanks to the current Board of Directors for their contributions and welcome and install the new Board of Directors for the coming year.

As usual, there will be the announcement of the infamous JA (Jack Ass) Award that will be presented to some individual, who during the year, in good faith, clear conscience and without presence of mind, did something really out of line with what we consider "Rational Action" (i.e. something stupid). This award is usually determined by our beloved Sunshine Committee members. However, this might be the year that we act like Egyptians and have the membership take to the ponds and come up with a co-nominee for the award, to supplement the ruling party's choices. For further information on the reasoning to this idea, please refer to the September 2010 Leader's Lines titled "It's OK to be a JA. This could be the year of the

Sunshine Committee Award. If you feel like being a revolutionary, submit your choice by secret email to rgarrettcpa@earthlik.net.

Mick Woodbury is back by popular demand to provide the entrée for the event. This will be fresh chicken fajitas with all of the makings. The cost will be \$8.00 per person, so join us and built your own burrito, taco or fajita plate just the way you like it.

Be sure to send in your reservation form located elsewhere in this article of Target Talk.



## AWARDS & INSTALLATION DINNER

❖ Sunday, April 17, 2011 ❖ 5:00 PM at Long Beach Casting Club ❖

Price for Dinner is \$8.00 per person

Name: \_\_\_\_\_

Number of people including myself: \_\_\_\_\_ Check enclosed for: \$ \_\_\_\_\_

I am willing to help out with preparation, or serving, or cleanup: \_\_\_\_\_

**You must make reservations. Send this form and your payment to Rich Garrett c/o LBCC, PO Box 90035, Long Beach, CA 90808-0035**

**Reservations must be received by Friday, April 15, 2011**



#### Free Educational Series

**Carl "Boomer" Stout - Green River**  
Saturday, February 5th, 10am-3pm

**Fly Fishing the Bays, Breakwaters & Off-Shore**  
Saturday, February 12th, 10am-3pm

**Tim Rajeff - "Understanding Spey Lines"**  
Saturday, February 26th, 10am-3pm

Store (714) 525-1827 Travel (714) 578-1880



YOUR FLY FISHING DESTINATION  
& RESORT OUTFITTER

FLY FISHING EXCURSIONS • CLASSES  
PRIVATE INSTRUCTIONS

**(310) 749-6771**

3901 Brayton Ave., • Long Beach, CA 90807 • [www.spfadventures.com](http://www.spfadventures.com)



## hotel CURRENT

**VICKI R. ARREGUIN**  
DIRECTOR OF SALES

5325 e. pacific coast highway • long beach, ca 90804  
direct 562.597.1341 x128 • facsimile 562.597.8741  
[vicki@hotelcurrent.com](mailto:vicki@hotelcurrent.com) • [www.hotelcurrent.com](http://www.hotelcurrent.com)