

Highlights

- ❖ Fly of the Month: Midge Emerger
- ❖ Club Trips for 2009
- ❖ Calendar

Inside

- Page 3: From Ireland to Patagonia, Ken Lindsay's Search
- Page 5: Southwestern Tournament
- Page 6: Tournament Casting Tips

Target Talk

Newsletter of the Long Beach Casting Club, Established 1925

February 2009

www.longbeachcastingclub.org

(562) 433-9408

Leader's Line ...

Happy New Year's and the Same Old Stuff

I hope you all had an enjoyable, happy holiday season and that Santa was generous and gave you everything on your wish list of the latest fishing toys. I had the good fortune to get my new Simms Vibram soled fishing boots. Somehow they actually shipped on schedule, exactly as the elves at Simm's had promised they would. My wife gave me a present she liked: a 'cute' metal figure of a fisherman dipping his line toward a row of fish. Even in my advancing age, there are lessons to be learned: you are going to get something. So either *ask* for something you want, e.g. new SA fly boxes always come in handy, or else you might get something 'cute'.

On the headline introducing this article, I'd like to put the emphasis on Happy. So much fear, misery, pain and suffering has appeared in the news lately, that one welcome resolution, if not a moral obligation, is to be happy. One thing I notice about the club is that when people come here they seem happy: they are thinking about good times, making plans to go fishing, improving their skills, helping friends and others to improve theirs. I have a friend who had lots of problems in 2008. He has every reason to be unhappy. But as we talked the other night, I realized he was looking forward with genuine optimism, good humor and excitement to having the time and flexibility to do a lot of things he always wanted to do. The club, fly fishing, good friends and a great attitude were helping him to make the best of a tough situation.

Of course New Years is a time of other resolutions as well. I thought I'd share some classics you've all heard or perhaps made before: 'I promise I'll

practice my casting.' 'I'm going to tie all my own flies.' 'I'm going to learn a lot more about aquatic entomology'. Does it sound like the same old stuff?

Well, the New Year brings the gift of time. As you look ahead the club offers lots of opportunities; ten different speakers at monthly meetings to learn from; twelve different club trips that offer interesting and varied venues for people to fish; a monthly conservation activity, involvement in Project Healing Waters, fly tying, basic and intermediate casting clinics, competitive casting, participation in three different casting tournaments, a chance to hang out with talented, knowledgeable people willing to share their talent and experience with you. How do you plan to use the time? I'm looking forward to focusing more on my casting and to a schedule of fishing trip to interesting places.

It seems ironic that as the New Year begins,

Leader's Line continues on page 2

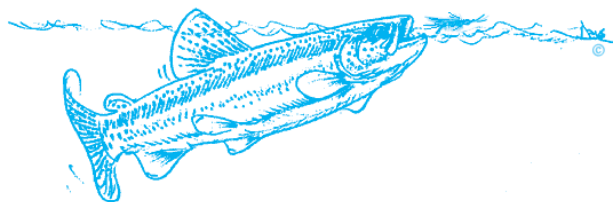
Leader's Line *continued from page 1*

the club's operating year gradually draws to a close. In April, a new board will take over and provide continuing leadership for LBCC.

Over the next month, the club will have a busy schedule. Fly tying will continue in full swing each Tuesday night under the watchful eye of Mark Tsunawaki and staff. I learned last night that we have an excellent group of tiers this year including a family with three generations together at the tying tables. The Lower Owens #1, one of the best trips of the year will happen mid-month under the expert leadership of Sadler, Rivett and Iseda who know how to run a trip where everyone feels welcome and everybody catches fish. Plus we have Sunday morning casts, a pond cleaning and a conservation day. In the meantime preparations are underway for the Southwestern tournament in mid-February and the membership renewal process will begin soon.

We recently had a visit from our friends at the Pasadena Club who explored ideas with us on how they might stimulate greater interest in casting and in other club activities. After reflecting on our conversation, I realize that we are blessed with a lot of energy, activity and excitement at LBCC because it comes from you, our members.

Keep it flowing!



There Here!

CAROLE KATZ, SENIOR DIRECTOR

For the first time in over a year we finally have a full complement of LBCC apparel. We have fishing shirts (\$40), hats (\$10), long sleeved T-shirts (\$12) and Polo shirts (\$25).

OFFICERS

PRESIDENT

RICK HILLES
(949) 854-1076

1ST VICE PRESIDENT

MICK WOODBURY
(714) 840-5649

2ND VICE PRESIDENT

BETTYE SWART
(949) 462-9553

RECORDING SECRETARY

FRANK KROPACEK
(562) 434-2976

CORRESPONDING SECRETARY

BOB MIDDO
(310) 798-2009

CAPTAIN

MARK LIPE
(562) 494-1169

TREASURER

RICH GARRETT
(562) 422-9696

MEMBERSHIP SECRETARY

MARK FLO
(562) 420-8121

SENIOR DIRECTOR

CAROLE KATZ
(714) 731-6044

JUNIOR DIRECTOR

JOHN VAN DERHOOF
(562) 424-7313

TARGET TALK EDITOR

JOHN VAN DERHOOF
(562) 424-7313

From Ireland to Patagonia: Ken Lindsay's Search for Big Brown Trout

MICK WOODBURY, 1ST VICE PRESIDENT

Most fisherman dream of living by a trout stream. Ken Lindsay was born by one—an exotic one at that. He grew up living 100 yards from the Glen River, a delightful little trout stream to this day, in Dunmurry, North Ireland. It was there that Ken's education about trout began as he watched how they feed by observing them as a small child.

At 18 he came to California seeking fame and fortune and first walked into Fishermen's Spot in the fall of 1970 and met Steve Ellis. They have been friends ever since. In the mid '70s Ken went to work for Dave Inks and Andre Puyans at Creative Sports in Pacheco, California. Under the tutelage of these fine gentlemen he gained a vast amount of knowledge about fly tying materials, fly casting, knots & rigging, fly tying, and entomology.

In the mid 1970s, he became manufacturer's representative and for the next 15 years represented several fine manufacturers including Cortland, Mustad, Simms, Lamson, Fisher, Thomas & Thomas, Umpqua, Pflueger and JW Outfitters. It was the perfect opportunity to travel and fish all over the West.

When Steve offered Ken the chance to own a piece of "The Spot" he thought about all the things he had learned over the years about the retail fly fishing business—and bought in anyway.

Ken says, "Fly fishing has taken me to many beautiful locations, including Alaska, Canada, Western U.S., Christmas Island, the British Isles and Chile. I have a long list of other places that I want to fish and many species that I have yet to catch. That's the fun of fly fishing. You are never quite finished learning and growing in this sport."

Ken continues, "The flight into Balmaceda airport in Patagonia gives you an aerial preview of the kind of terrain that you will be fishing. Snow capped peaks and glaciers are tucked into the folds of the mountains. River valleys, so many river valleys, slice their way westward carrying the snow melt to the Pacific and the promise of trout, big trout. The rivers and lakes of Patagonia teem with rainbows, browns and brookies which were transplanted here and have thrived in a perfect trout environment. But Patagonia is much more than just great fishing. It is also a land of great wines, gourmet food, world class scenery and warm wonderful people. I'll try to give you an overall flavor of the fishing and the country."

Please join us on February 26 and hear the stories of fine fishing from Ken Lindsay, a man hooked on trout from birth.



Past President's Meeting in March

MICK WOODBURY, 1ST VICE PRESIDENT

Our March Monthly Meeting will be hosted by the Past President's. The presentation that evening will be from our own John Van Derhoof—a Past President from 1982–1983. The program will follow personal John's journey through the world of fly fishing and fly tying. From his start in the lakes and streams of the Sierras to some of the most popular and exotic locations around the world.

Join us for an entertaining evening!

Casters Raise the Bar

MARK LIPE, CAPTAIN

Casters continue to impress as Mark Tsunawaki has taken the lead over John Van Derhoof in the 5 wt. Combination Event with a high score of 5140. He scored perfect 500's at six of the eight accuracy targets including the bonus target 70 feet away. His other two accuracy scores were a 300 and 100. His two longest distance casts were 90 and 84 feet for a score of 1740. Distance points are determined by multiplying the best two casts by 10.

John Van Derhoof returned the favor and passed Mark Tsunawaki for 1st place in the ¼ oz. Plug Distance event with an impressive cast of 172 feet. Mark Tsunawaki secured 2nd place with a personal best of 161'. Bob Middo continues to impress with the Angler's Fly Distance with a cast of 142 feet.

Mark Lipe took over 1st place in the ¾ oz. plug accuracy game with a score of 95. Mark Tsunawaki is close behind with an improved score of 94.

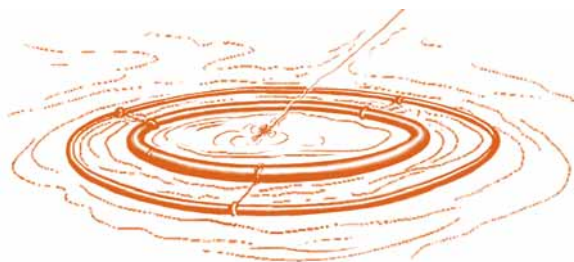
Listed below are the top 3 Western scores for each event through January 4th

Western Scores as of January 4, 2009

EVENT	PLACE	SCORES	LBCC CASTER
Trout Fly	1st	99	Joe Libeu
Trout Fly	2nd	98	John Van Derhoof
Trout Fly	3rd	97	Mark Lipe
Dry Fly	1st	100	John Van Derhoof
Dry Fly	2nd	98	Mark Tsunawaki
Dry Fly	3rd	97	Larry Allen, M. Tsunawaki & J. Van Derhoof
Bass Bug	1st	95	Rick Hilles & John Van Derhoof
Bass Bug	2nd	94	B. Heard, Hilles, Lipe, Tsunawaki & Van Derhoof

EVENT	PLACE	SCORES	LBCC CASTER
Bass Bug	3rd	93	Larry Allen, Carole Katz, Frank Kropacek
Wet Fly	1st	97	Carole Katz
Wet Fly	2nd	96	Jeff Katz, Mark Lipe, J. Van Derhoof
Wet Fly	3rd	95	Bill Heard
¼ oz. Plug	1st	91	Larry Allen, Mark Flo, Mark Lipe
¼ oz. Plug	2nd	90	Mark Tsunawaki
¼ oz. Plug	3rd	88	M. Tsunawaki & J. Van Derhoof
¾ oz. Plug	1st	95	Mark Lipe
¾ oz. Plug	2nd	94	Mark Tsunawaki
¾ oz. Plug	3rd	92	Mark Tsunawaki
5/8 oz. Plug	1st	95	Mark Tsunawaki
5/8 oz. Plug	2nd	94	Mark Tsunawaki
5/8 oz. Plug	3rd	93	Mark Lipe
Trout Fly Distance	1st	99'	Bill Heard
Trout Fly Distance	2nd	95'	Rick Hilles
Trout Fly Distance	3rd	93'	Bob Middo
Angler's Fly Distance	1st	143'	Bob Middo
Angler's Fly Distance	2nd	142'	Bob Middo
Angler's Fly Distance	3rd	126'	John Van Derhoof

¼ oz. Plug Distance	1st	172'	John Van Derhoof
¼ oz. Plug Distance	2nd	161'	Mark Tsunawaki
¼ oz. Plug Distance	3rd	160'	John Van Derhoof
5 wt Combination	1st	5140	Mark Tsunawaki
5 wt Combination	2nd	5060	John Van Derhoof
5 wt Combination	3rd	4920	John Van Derhoof



Southwestern Tournament

MARK LIPE, CAPTAIN

On February 14 and 15, the Long Beach Casting Club will host the annual 2009 Southwestern Casting Tournament. Casters from Long Beach, Oakland, San Francisco, San Jose, and Seattle will showcase their talents and compete for 1st, 2nd and 3rd place medals in "A", "B", and "C" class divisions. Not everyone earns a medal but I can assure you that everyone has a wonderful time.

I hope you can join us and be part of this prestigious event. It's a wonderful opportunity to challenge your skills and meet some wonderful people. Registration fees are affordable with costs only \$1 for the tournament plus \$1 per event. If your fishing gear does not meet tournament regulations, we will have tournament ready rods, reels, and leaders available. Caster's classification will be available at registration time and beginners can compete in the "C" division.

Listed below is schedule of events:

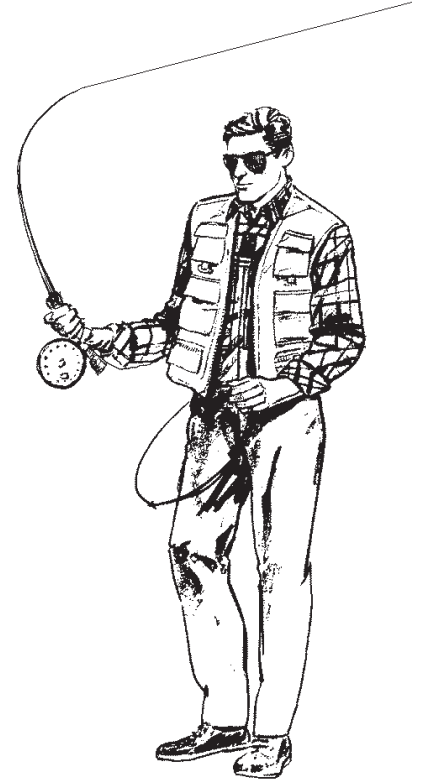
Saturday, February 14, 2009

Trout Fly Accuracy @ 9:00 AM
 Bass Bug Accuracy
 ¼ oz. Plug Accuracy
 Lunch
 Open Plug Accuracy
 Angler's Fly Distance
 ¼ oz. Plug Distance
 Dinner at Clubhouse 7:00 PM

Sunday, February 15, 2009

Sunshine Committee Breakfast @ 7:30 AM
 Dry Fly Accuracy @ 9:00 AM
 Wet Fly Accuracy
 Lunch
 ¾ oz. Plug Accuracy
 5/8 oz. Plug Accuracy
 5/8 oz. Plug Accuracy Team Event
 WTCA Awards

If tournament casting is not your cup of tea, come anyway and witness some of the best casters around. Watching a caster navigate their dry fly over a 30 inch target with precision is impressive! Appreciate the skill and talent involved, when a caster can produce tight loops with ease and time their application of power perfectly, causing their fly to soar over 160 feet. Be intrigued, when a plug caster loads the rod with a low trajectory cast and gently feathers the plug into the target for a perfect score. In addition to the friendly competition and showcasing of talent, hearty and delicious meals will be served. This event is one of the nicest social events of the year! Hope you can join us.



You can review the casting games though the American Casting Association's website www.americancastingassoc.org. Rules are the same except with the scoring. During the Northwestern and Southwestern tournaments, the maximum demerit for each target is minus-two and demerits for penalties are only minus-one. It should be noted that the western ¼ oz. Plug Distance event is a Western event only and not related to the ACA.

We still need volunteers with score keeping and general clean up. Please contact tournament captain, Mark Lipe at 562-494-1169 or mlipe@elcamino.edu for assignments.

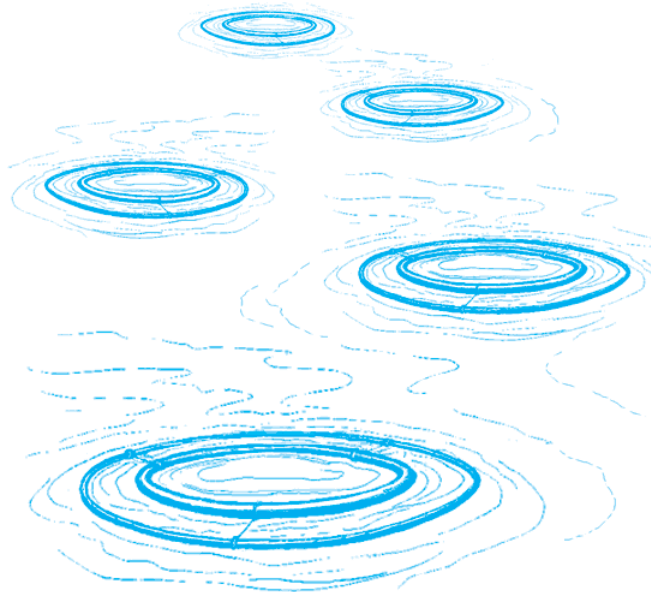
Tournament Casting Tips

LARRY ALLEN, MEMBER

Larry Allen has given me permission to include a re-print of a letter he sent to John Breslin, an FFF Casting Board Governor on tournament accuracy casting. There is a lot of information here for beginning and experienced casters (ed.).

Dear John,

...As I promised when we were going through the 5 Weight Game I will attempt to list some of the accuracy tips that I have collected. I became interested in the accuracy games over at the Long Beach Casting Club about 3-4 years ago while taking the Master's test from Joe Libeu and John Van Derhoof. I later returned to Long Beach to watch a tournament and was "forced" to enter with borrowed equipment and "how to" instruction given as I played. After this, I was hooked...



eye and the target. For me and other new casters that I watch, the tendency is to try to cast in front of your eye so that you "sight" the rod blank against the target like a gun sight. This does not allow for depth perception. Joan Wulff wrote about this in her "Fly-Casting Accuracy" book but I did not get it until I began target casting. To get the good depth perception, hold the rod slightly off to the side from your eye (but still in the vertical plane) and then for the triangulation, point the reel exactly at the target. The cast comes slightly from the outside to the inside and gives you the depth since you see the fly come in from the side.

❖ **Tempo** – Steve Rajeff suggests making the back cast slightly faster and then slow down for the front cast. This lets you "feel" the tug of the un-curl in the back. The perfect back cast lets the fly straighten and hover on the back cast. This lets you start the front cast with a fully loaded rod. A loaded rod will require fewer muscles (and less stroke length if this word still exists after Bruce and Bill get done?) to make the front cast and will be more accurate.

TARGET CASTING PRINCIPLES

- ❖ Cast in a vertical plane so that the uncurl of the loop is into the target. This is not to be confused with a parallel loop but that the parallel loop is in the vertical plane. A parallel loop in an off vertical position will try to make varying degrees of a "curve" or "tuck" cast. This would be true in even a slight deviation from the vertical. At 50 feet, the slightest deviations will show dramatically.
- ❖ I think that all the good casters that I have watched triangulate the rod, their dominant
- ❖ Rod position and distance relationship. For the close casts, the rod is inside the shoulder and in front of your body. As the distance lengthens, you end up just even with or outside the shoulder as stroke length for you dictates.
- ❖ Right hand casters keep the right foot forward. This helps eliminate any body twisting during the cast. Most people do rotate their body around to the left to free the wrist movement. If you stand square, then the right thumb restricts your wrist movement and stroke length. If you are not far enough around to the left, you can

tell because your forearm will get “frogged” muscles. A good position will have a vertical rod with relaxed muscles during casting. Chris Korich likes to feel that his cast is done with all large muscles of the shoulder and body.

ACQUIRING THE TARGET SEQUENCE

This was given to me by John Napoli a former ACA All American.

1. Double haul to a spot that looks like it is over the target about waist high.
2. Change to casting hand only and begin to “hover” (the hover is a slightly overpowered front cast that makes the fly stay at the uncurl height just long enough to see its position above the target). At this point you add or subtract line until you feel that you are over the targets front edge.
3. Now lower the fly about a foot above the target (you would no longer hover as this would not be a smooth cast) and raise the back cast to maintain a 180 degree path front to back. If you are not sure that you are parallel, then lay the fly down and see that the fly lands first. If the line or leader lands before the fly, then you are low in the back cast plane. Tim Rajeff is always checking this relationship and teaches it in even his beginner classes.
4. Cast slow enough that you can see the line uncurl and clearly see the fly. If the distance does not seem right, then start to hover again



and do fine adjustments.

5. I notice that most good casters look up at their front stop and watch the forward cast loop develop and then follow it down to the fly. Watching over the target is almost impossible as the fly comes in to the window of vision for only a fraction of a second.
6. Now that you have the distance and trajectory, next is to “cut the cake”. This means get your cast in the exact middle of the target before you consider a lay down.

7. The lay down. Now you have the distance and the middle of the target picked out. When

you are ready to lay the fly down, you must not change anything other than a slight tilting of the casting plane. You have been casting 1 foot high and when you change to the surface of the water, you must also change the plane in the back cast to be slightly higher. John told me to imagine the fly landing 2” below the water surface. This

will allow for a firm lay down that is resistant to side winds but still allow the fly to float when it lands. I must note that all of us that have to practice on grass, generally cast too fast and too hard. When we get to water, the fly sinks and we get a deduction.

Some other thoughts: Last year when I cast the Northwest Regional, Steve Rajeff gave me much help. He would walk by while I was casting and have me point the reel at the target. This is a constant struggle for me to keep the reel from being (turned) out. If you think about it, the reel

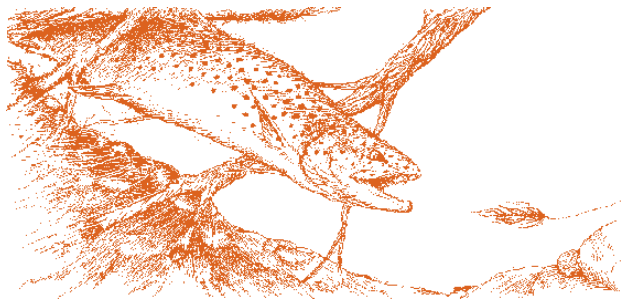
pointing out sets up a little elliptical path of the rod tip and an un-curl that is not truly vertical and at the target.

STROKE LENGTH

We spend most of our casting life worried that there will be too much line for the amount of stroke that we are using. Yes, this causes tailing loops since the power of this short stroke plus the weight of a longer line collapses the rod tip and makes a concave tip path.

When you start to target cast the problem is the opposite. Too long of a stroke for the amount of line that is being used. In target casting this is a terrible problem since the longer the stroke, the greater the chance for a tracking/timing error. We are so concerned with the tailing loop that we all overkill the stroke length the other way for insurance. Now I will spend the rest of my casting life trying to shorten my stroke (and still not tail).

Steve Rajeff worked with me on the Wet Fly game at the 55 foot target, changing my back stop from 2 o'clock to nearly 12 o'clock which felt like I would hit either me or the rod. Now I am almost stopping straight up and the cast has improved. You are able to use shorter strokes for a given length of line by being very parallel, getting max rod loading with better timing and tempo. The efficient cast does not need as much stroke length as the inefficient cast.



John, if you are interested in accuracy casting you could get better information from some of the long time ACA guys. I have only written my personal experiences instruction from some of these people. I am always amazed at the value of reading the great casting books again as I journey along my casting life. I seem to pick up subtle gems with each step in skills. This would be especially true of Joan Wulff's writings. I think she has the technical part dialed in beyond my simple understanding and that I will be learning from her books for years to come.

Respectfully,

Larry Allen

Membership Requests

MARK FLO, MEMBERSHIP SECRETARY

Please welcome the following new members who joined us in the past months:

- ❖ Clay Grander of Long Beach
- ❖ David Holden of Long Beach
- ❖ Beth McFadden of Long Beach
- ❖ Eric Mears of Cypress

Please welcome all our new members at the next club meeting. We wish you great success in all your fishing endeavors and adventures. If you have any question just call me at 562-420-8121 or email at m.flo@gte.net.

Long Beach Casting Club Trips 2009

BETTYE SWART, 2ND VICE PRESIDENT

By the time you read this the first group to go to the Lower Owens in 2009 has some fish stories to tell.

Perhaps you as well as I, did not make the first trip and now want to head to our favorite area for the February club trip. There is a lot of open water for us to explore. Join Mark Flo and I as we go for the big fish—must be a monster hiding someplace in those waters. Be at the Pre-trip Meeting to glean all the information you can.

Closer to home, I spoke with Matt Rickerd about the upcoming Newport Bay Bass Tourney. Seems this has been going on for twenty-eight years, WOW!! I am getting my spin gear out of moth balls and joining this adventure...*are you?*

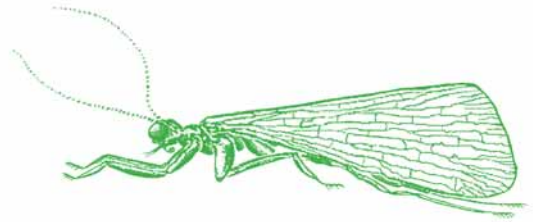
Come on, get with the in crowd and meet lots of great fly fishers from your club. See you on the water...

Club Trips for 2009

January 28	Pre-Trip Meeting—Lower Owens Trip #2 at 7:00 PM
February 7-8	Lower Owens Extravaganza #2: Streamkeepers: Mark Flo and Bettye Swart
March 11 th	Pre-Trip Meeting – Newport Bay Bass Tourney at 7: 00 PM
March 22	Newport Bay Bass Tourney
April 29	Pre-Trip Meeting – Green River at 7:00 PM
May 10–14	Green River Trip: Streamkeepers: Yash Iseda, Dan Rivett and Jeff Sadler
June	Mammoth Stillwater Float Tube & Stream Trip
July	Brookie Bash

Any questions, contact Bettye Swart (949-462-9553) or the streamkeeper (phone numbers are listed in you club roster).

Here fishy, fishy.....



Maggie Merriman Entomology Workshop

JOHN VAN DERHOOF, EDITOR

On Saturday, March 28, 2009 join Maggie Merriman at the Long Beach Casting Club for her 11th annual BASIC ENTOMOLOGY WORKSHOP FOR FLY FISHERS.

You will learn how to “*Match the Hatch*” and how to select the correct fly for a given situation. Maggie stresses the use of common English names and not the biological “Latin” names many associate with entomology, so you can leave your *Acroneuria californicas* at home.

The class will begin around 9:00 AM and run until 1:00 PM. The cost for the workshop is \$50.00 and includes samples of insects, corresponding flies and an extensive handout. Bring a snack, note pad and some fly boxes to look at and compare the insects.

You must Pre-Register for the workshop by mailing the fee by March 21, 2009 to: Maggie Merriman, 19791 Coastline Lane, Huntington Beach, CA 92648; or you can call her with any questions you may have at 714-969-5829. You will receive an exact map of the location upon registering.

ALASKA '09

Y o u ' r e I n v i t e d

\$870

LOWER PRICES!!!

Week One: August 7-14th

Week Two: August 14-21st

Basic Package Cost: Food, Lodging and
Share of the car rental for a week.

Jerry has lowered the cost of the trip, which should be great fun for all of us. The cost is for a week of food and lodging at the Bunkhouse will be \$110 per day, or \$770 for a week. Since the trip is "self guided", the cost of the week will depend on what you decide to do.



The cost of the cars is \$500 to \$600 per week for each car, and that averages out to about \$100 per person per week to have access to the two cars we rent. The rental cars will transport fly fishers to the streams and also be used on days when access to the straits is blown out. If we add the car cost of \$100 to the \$770, each persons cost for the week for food, lodging and the car is \$870. Jerry will collect for the trip at the end of the week, so all you need to pay until then is the \$200 deposit. Jerry does not accept Credit Cards, so bring your checkbook.

What will hold your spot is a deposit of \$200, made out to Coffman Cove Bunkhouse, and mailed to Mike Allen, and it has to be first come, first served.

Design your Week: Extras

- Charter \$200/day
- Skiff \$45 each person
- Fishing kayak \$45
- Fly Fishing—covered

Proposed Dues Increase

RICK HILLES, PRESIDENT

The year 2008 was an important one in our history with the rebuilding of our historic clubhouse. If you haven't seen it you must as it maintains the tradition of the original but has been modernized for our comfort and safety.

A tremendous amount of work has been done to the clubhouse and there is still a lot more that needs to be done. This includes a fire alarm system and updating our insurance needs to help us avoid another 2008. With this in mind the Board of Director's has voted to propose an increase in the annual dues for membership in the Long Beach Casting Club.

The proposed increase will raise annual dues from their current \$45.00 to \$55.00. This will also mean that a Family Membership will increase from \$55.00 to \$65.00 and an Associate Membership will increase from \$22.50 to \$27.50 per year. Junior Memberships will remain at \$8.00 per year.

The proposed increase is an amendment to the club's Constitution and Bylaws and as such, will require approval by the General Membership at a Special Meeting or the Annual General Meeting on April 2, 2009 in order to be enacted.

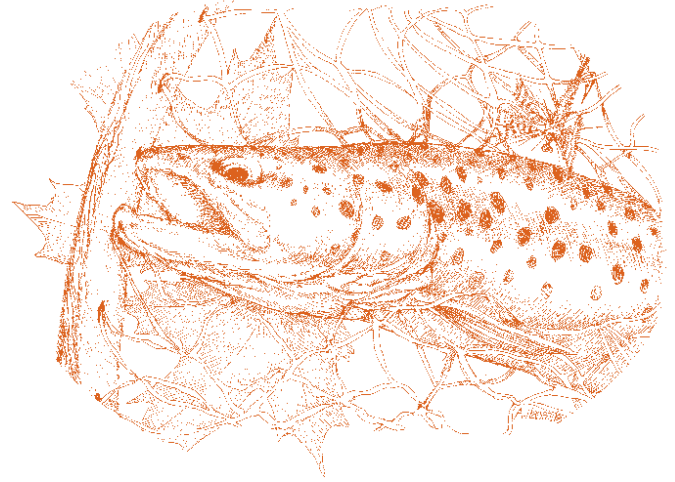
The specific proposed changes to the Constitution and Bylaws are as follows:

ARTICLE III.4 – Remove "...for the first person and \$5 for each additional person." Add a "." after "\$10".

ARTICLE IV.2 – Change "\$45.00" to \$55.00".

ARTICLE IV.8 – Remove this entire section as this action has been superseded by the on-line Target Talk and \$10 charge for printing.

This is the first dues increase in at least ten years and although the Board would prefer not taking this step, it is the prudent action to take.



Corrected Dates For the On The River Clinic

JOE LIBEU, PAST PRESIDENT

The annual ON THE RIVER CLINIC for new club members will be held starting this month. The lecture dates are, Wednesday the 25 of February and Wednesday March 4 and 11. The lecture portion will begin at 7:00 PM on those evenings. Each lecture will be different and will cover equipment, entomology, reading the water, knots etc.

The weekend of March 21–22 is set for our trip to the Bishop area to fish the Lower Owens for the "on the river" portion of the clinic.

I am hoping that you new club members will attend this clinic as it will provide you with valuable information on becoming a much more productive fly fisher. Sign up early as the class is limited to 20 students. If you have any question please contact me at 310-749-6771.

Fly of the Month: Midge Emerger

JOHN VAN DERHOOF, EDITOR

It's the dead of winter and time to break out your fly rod. If you don't believe me, drive up Highway 395 and check all of the folks out there, including your fellow club members, fishing the lower Owens. I am not talking about dredging the depths with a streamer or a Woolly Bugger—no, I'm talking about top water or near top water activity. I am talking about midge hatches.

Midges hatch from lakes and streams throughout the year but tend to be more important to your fishing success in the winter and early spring when other insects are much less active and therefore unavailable to hungry fish. This stems from the fact that few other insects are insane enough to come out when it is that cold and fish still have to eat something. Now you will find a few of those crazy Blue-Wing Olives out and about at this time of year but, by and large, it's the midges that are the most consistently available food source.

This month's pattern is best fished dead drift with an indicator or as the lead fly in a tandem set up with a Griffith's Gnat, a very small Elk Hair Caddis or a Hank of Hair as the dropper. This pattern with the pink body and copper rib has worked well on Lake Crowley, the Owens River, the Green River, and the Colorado River at Lee's Ferry. There are other color combinations like lime green & gold, pale olive & gold, black & gold, red & gold, pearl & copper that work very well and I would suggest having a few of them with you.

Now, all you have to do is stay warm.

Materials for tying the Midge Emerger:

- Hook: Caddis/midge type; Tiemco 2487 #16-20 or similar
- Thread: Primrose 8/0
- Wing: Light dun cul du cunard (CDC)
- Body: Krystal Flash ribbed with wire, good color combos are: pink/copper, lime green/gold, pale olive/gold, red/gold, pearl/copper
- Thorax: Peacock herl
- Gills: Light dun cul du cunard (CDC)



Instructions for tying the Midge Emerger:

1. Attach the thread and wind down to about the middle part of the bend and tie in the wire. Wind the thread back to the thorax, tie in the Krystal Flash and wrap down to where the rib was tied in and back and tie off.
2. Reverse wind the rib to the thorax and tie off.
3. Measure and tie in the CDC wing but do NOT trim off the butts. The wing should be half the length of the body
4. Tie in the peacock herl for the thorax, wind to the headspace and tie off.
5. Wind a small head underneath the butt ends of the wing and whip finish.
6. Trim the butt ends of the CDC which become gills to the length shown in the drawing.

It's Show Time

PAUL BURGNER, MEMBER

Be sure to mark your calendars now and plan on attending The Fly Fishing Show, in Pasadena at the Pasadena Center. This is the show's seventh year and it will provide you with numerous programs designed to improve your fly fishing ability. It was a great show last year.

The Fly Fishing Show hours are:

Saturday, February 21st from 9:00 AM to 5:30 PM
Sunday, February 22nd from 9:00 AM to 4:30 PM

Also, don't forget the Fred Hall Show which will be held on March 4th–8th at the Long Beach Convention Center. If you would like to volunteer to work any of these shows, please call Paul Burgner @ 562-634-1515.

SIERRA PACIFIC FISHING ADVENTURES

YOUR FLY FISHING DESTINATION & RESORT OUTFITTER

FLY FISHING EXCURSIONS • CLASSES • PRIVATE INSTRUCTION

Bighorn River Trips

May 21–25; May 26–31; August 2–7; August 9–14, 2009

Join us for a 6 day Fly fishing Adventure to Montana's Bighorn River. Experience a fishing odyssey you will remember for years to come! The Bighorn is one of America top Blue Ribbon fisheries with Rainbow and Browns in the 16 to 23 inch range.



4 Days Guided Drift Boat Fishing—2 Anglers per Boat. Accommodations, Ground Transportation, Continental Breakfast and Dinner while at the Lodge plus Lunches on Guided Fishing Days Included. Airfare, Fishing License, Gratuities Extra. **\$1755 pp** (double occupancy) with all meals included.



Sierra Pacific Fishing Adventures • 3901 Brayton Ave., Long Beach, CA 90807 • (310) 749-6771 • www.spfadventures.com

Calendar of Events

February

1	Sunday	7:30 AM	Breakfast
		9:00 AM	Casting Games
2	Monday	9:00 AM	Project Healing Waters Clinic
		7:00 PM	Board of Directors Meeting
3	Tuesday	7:00 PM	Fly Tying
5	Thursday	7:00 PM	Activity Night at the Pond: Casting
6-8	Weekend		Club Trip: Lower Owens #2
10	Tuesday	7:00 PM	Fly Tying
11	Wednesday	9:00 AM	Conservation Team at San Gabriel
12	Thursday	7:00 PM	Activity Night at the Pond: Casting
13	Friday	9:00 AM	Southwestern Tournament Practice
14-15	Weekend	9:00 AM	Southwestern Tournament (breakfast on Sunday starts at 8:00 AM)
17	Tuesday	7:00 PM	Fly Tying
19	Thursday	7:00 PM	Activity Night at the Pond: Casting
21-22		9:00 AM	The Fly Fishing Show, Pasadena
22	Sunday	7:30 AM	Breakfast
		9:00 AM	Casting Games
24	Tuesday	7:00 PM	Advanced Fly Tying
25	Wednesday	7:00 PM	On the River Clinic: Lecture begins
26	Thursday	7:00 PM	Monthly Meeting: Ken Lindsey on Patagonia

March

1	Sunday	8:00 AM	Pond Cleaning
2	Monday	7:00 PM	Board of Directors Meeting
3	Tuesday	7:00 PM	Advanced Fly Tying
4-8	Week		Fred Hall Show
4	Wednesday	7:00 PM	On the River Clinic: Lecture
5	Thursday	7:00 PM	Activity Night at the Pond: Casting
8	Sunday	7:30 AM	Breakfast
		9:00 AM	Casting Games
10	Tuesday	7:00 PM	Advanced Fly Tying
11	Wednesday	9:00 AM	Conservation Team at San Gabriel
		7:00 PM	On the River Clinic: Lecture
		7:00 PM	Pre-Trip Meeting: Newport Bay Tournament
12	Thursday	7:00 PM	Activity Night at the Pond: Casting
17	Tuesday	7:00 PM	Advanced Fly Tying
19	Thursday	7:00 PM	Activity Night at the Pond: Casting
21-22	Weekend		On The River Clinic: Trip
22	Sunday	7:30 AM	Club Trip: Newport Bay Bass Tournament
24	Tuesday	7:00 PM	Advanced Fly Tying
25	Wednesday	7:00 PM	Casting Instructor's Workshop
26	Thursday	7:00 PM	Monthly Meeting: Past President's Meeting with John Van Derhoof
28	Saturday	9:00 AM	Maggie Merriman Entomology Class
31	Tuesday	7:00 PM	Advanced Fly Tying

April

1	Wednesday	7:00 PM	Casting Instructor's Workshop
2	Thursday	7:00 PM	Annual General Meeting
7	Tuesday	7:00 PM	Advanced Fly Tying
8	Wednesday	9:00 AM	Conservation Team at San Gabriel
		7:00 PM	Casting Instructor's Workshop
9	Thursday	7:00 PM	Activity Night at the Pond: Casting
11	Saturday	6:00 PM	Awards & Installation Banquet
12	Sunday	8:00 AM	Pond Cleaning
14	Tuesday	7:00 PM	Casting Clinic Orientation
15	Wednesday	9:00 AM	Casting Instructor's Workshop
16	Thursday	7:00 PM	Activity Night at the Pond: Casting
19	Monday	9:00 AM	Project Healing Waters Clinic
21	Tuesday	7:00 PM	Activity Night at the Pond: Casting
23	Thursday	7:00 PM	Activity Night at the Pond: Casting
28	Tuesday	7:00 PM	Casting Clinic: 1st Night of Casting
29	Wednesday	7:00 PM	Pre-Trip Meeting: Green River
30	Thursday	7:00 PM	Club Meeting: to be determined

Simon Gawesworth Two-Handed Casting Clinic

RICH GARRETT, TREASURER

We will again be fortunate to have Simon Gawesworth as a guest of our club. Simon is one of the pre-eminent two-handed casting instructors in the world. He is graciously providing the club with a clinic for 12 lucky casters. The clinic will be held at the Long Beach Casting Club from 6:00 to 9:00 PM on Friday, March 13.

Because the workshop is limited to 12 participants on the pond and to make the enrollment process as equal and fair as possible, we are asking anyone interested in attending the class to return the attached reservation request to me not later than Monday February 23. We will draw twelve names to be eligible to attend. The selected members will be notified of the date of the class and requested to send the required payment no later than March 5, 2009. If any of the selected members payment is not received by March 5, their reservation will be forfeited and an alternate name will be drawn. Please follow the directions below:

1. The instruction will only be open to club members. Membership status will be checked.
2. The cost is \$20, to be made upon notification



of being selected, payable to LBCC and mailed to: Rich Garrett, 6105 California Ave., Long Beach, CA 90805. Be sure to include the reservation form to request attendance.

3. Do not mail or deliver reservations to the clubhouse or the club's P.O. Box.
4. No reservations will be accepted after February 23 – no exceptions.

Note: Just because we have only 12 casting slots available doesn't mean that you can't come down to watch, listen and learn from a true master of the art of Spey Casting. Quite the contrary! Everyone is welcome. I know I'll be there.

The reservation form can be found below.

Good luck and hope to see you there.

Simon Gawesworth Two-Hand Casting Clinic

❖ FRIDAY, MARCH 13, 2009 ❖ 6:00 PM TO 9:00 PM ❖

Name: _____

Phone Number: _____ e-Mail: _____

Yes, I have attended the clinic before: _____ No, I have not attended the clinic before: _____

NOTE: Application must be received by the LBCC no later than March 7, 2007; NO EXCEPTIONS. Mail the application to:

Rich Garrett – c/o Simon Gawesworth Clinic
6105 California Ave,
Long Beach, CA 90805



	CATALOG: This Edition of the catalog has over 32,000 fly fishing items listed – your one source for fly fishing travel, tackle equipment, tying tools and the largest selection of tying materials available.	<p>Located in the Disneyland Area</p>
<p>Don't Miss our Educational Fly Fair, Held on the week end before Thanksgiving. Come see the best fly fishing has to offer!</p>		
<p>www.bobmarriotts.com bmfsinfo@bobmarriotts.com 2700 West Orangethorpe Ave. Fullerton, CA 92833</p>	<p>Store..(714) 525-1827 Fax.....(714) 525-5783 Travel..(714) 578-1880</p>	



SIERRA PACIFIC
FISHING ADVENTURES

**YOUR FLY FISHING DESTINATION
& RESORT OUTFITTER**

FLY FISHING EXCURSIONS • CLASSES
PRIVATE INSTRUCTIONS

(310) 749-6771

3901 Brayton Ave., • Long Beach, CA 90807 • www.spfadventures.com

HUBER'S SHACKLE HAVEN

fly-fishing

fly-tying & fly-casting instructions	tackle-equipment-materials
18720 doty ave., torrance, ca. 90504	(310) 324-7748

